

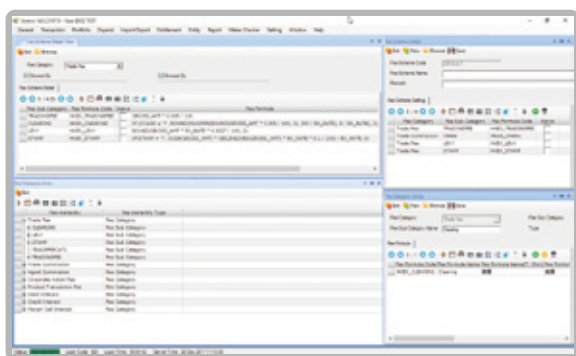
Xentrix

A Multi-Functional Back Office Settlement System

Especially Designed for Equity Brokerages.

Supports Multi-Market and Multi-Currency Back Office

Settlement Functions.



Xentrix is a multi-functional back office settlement system:

- Supports multi-market, multi-currency and multi product
- Perform daily Account Transfer Instruction (ATI) and Settlement Instruction (SI) job
- Corporate Action Handling
- Support Initial Public Offering (IPO) subscription handling
- Support Central Clearing and Settlement System (CCASS) file import/export
- Automatic day end batch job (including settlement, clearing and reporting)

Easy Integration with Various Kinds of Front End Trading System

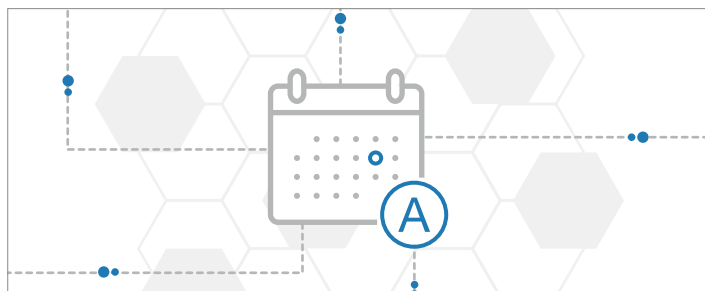
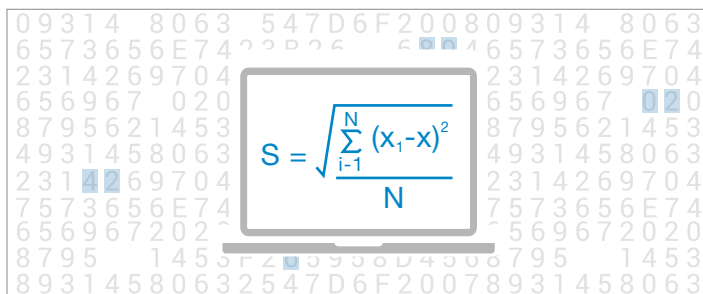
Xentrix back office settlement system can be seamlessly integrated with GES EX trading system which supports real-time data synchronization to minimize human error. Its open interface also supports integration with 3rd party trading system to meet the business needs of different brokers.

Corporate Action Handling

Xentrix supports a range of corporate actions including dividend payout, bonus shares, shares split and merge, rights and warrants exercise.

Flexible Commission and Fee Calculation

Users can set up their own fees and charges formula, which can be either fixed, flat or tier structured, to facilitate the calculation of client and agent commission, market charges or deposits and loan interest.

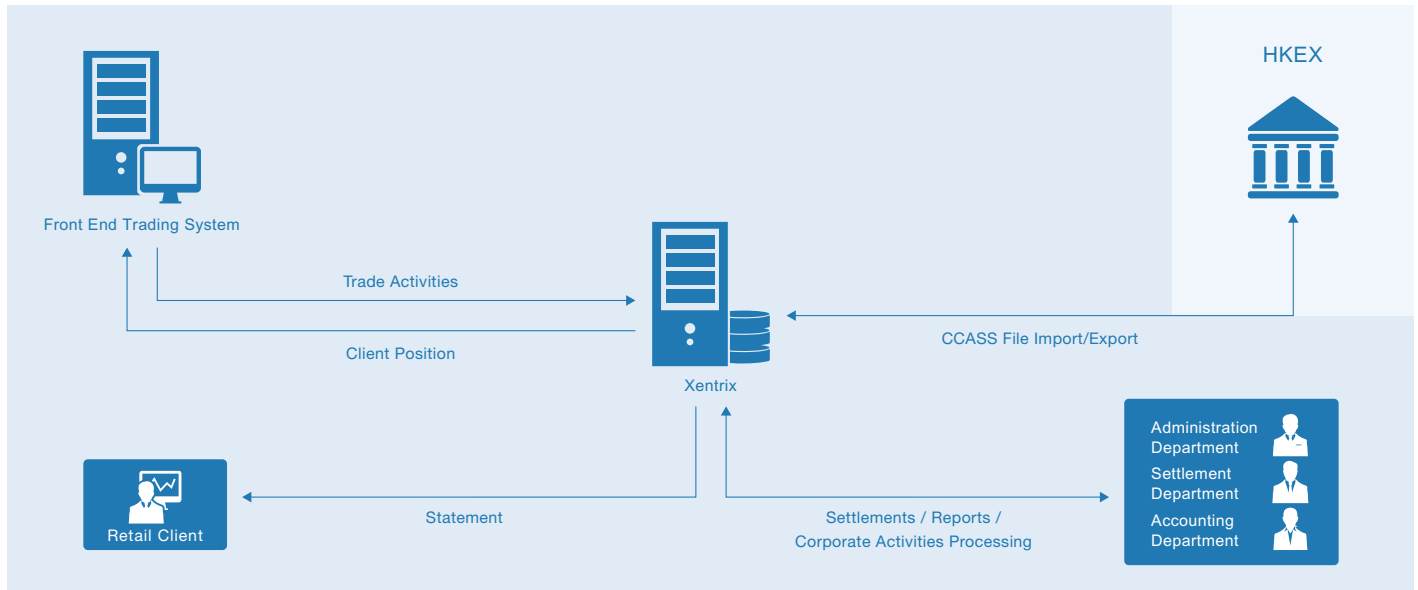


Automatic Day End Batch Job

Users can set daily or monthly day end process in Xentrix. The system will automatically perform day end tasks at specific time, such as exporting work reports to internal departments, or emailing statement to clients.



Xentrix Back Office Settlement Architecture



Benefits

- Customer-oriented**
 The system is designed and developed to cater different customer needs.
- Easy Integration with Various Kinds of Front End Trading System**
 Xentrix seamlessly integrated with GES EX to support real-time data synchronization. Its open interface also supports integration with 3rd party trading system to meet the business needs of different brokers.
- CCASS File Import/Export**
 Xentrix supports Central Clearing and Settlement System (CCASS) file interface which facilitates users to upload and download files to/from CCASS directly.
- High Security**
 Provides full range of access control on program, functions and data to control the system security.
- Simple Operation**
 Daily work schedule can be defined as batch job. The system will automatically perform day end tasks at specific time to ensure the tasks can be completed on time.
- Xentrix-Global Settlement Module**
 An add-on module which support the settlement tasks of both local and global markets in one system.

About GES

Global eSolutions (HK) Limited ("GES") is a Hong Kong-based financial trading solution provider dedicated to the financial technology industry for more than 10 years, serving customers mainly in Asia Pacific region, such as Hong Kong, Japan, Malaysia, Indonesia and Australia. GES empowers financial institutions with algo-trading capability, advanced risk management and FIX bridging solutions. GES fully covers the needs of the on-floor trading and OTC markets, with value-added services ranging from IT technical support, system integration, bespoke software and network infrastructure development to hosting services. With GES technologies, financial institutions are able to overcome the challenges of risk management, position management, liquidity source and trading across different financial instruments in a single platform. GES's well established partnering with financial institutions and brokerage firms can fulfill customers' needs of liquidity and market depth. GES ensures the highest level of certainty and satisfaction through comprehensive industry expertise and a deep-set commitment to customers.

Enquiry: +852 3412 3636
 Email: sales@ges.com.hk
 Website: www.ges.com.hk

Address:
 Room 3004-3008, 30/F, Shui On Centre,
 6-8 Harbour Road, Wan Chai, Hong Kong